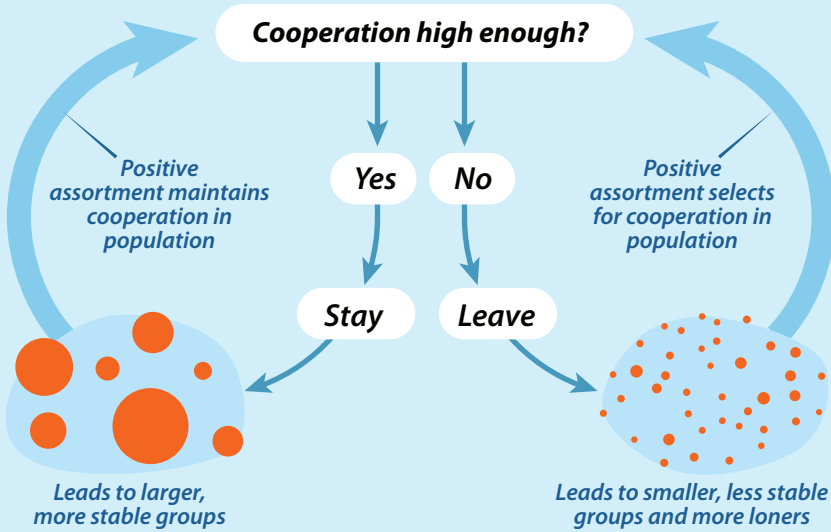
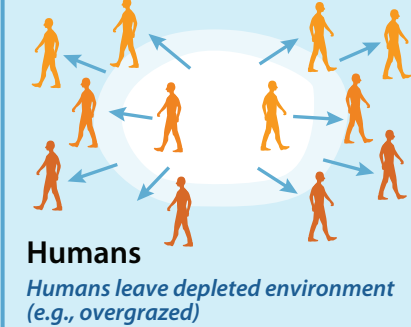
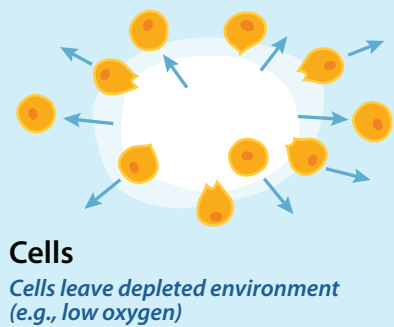


Walk Away

Conditional movement away from poor social environments



Examples



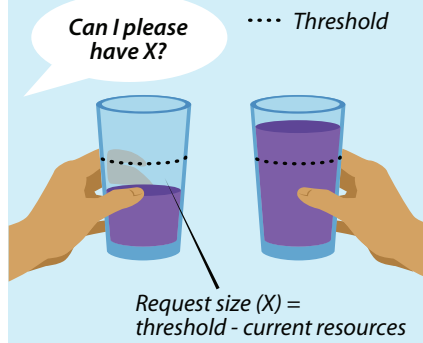
Need-based Transfers

Resource sharing based on the need of recipient

How it works

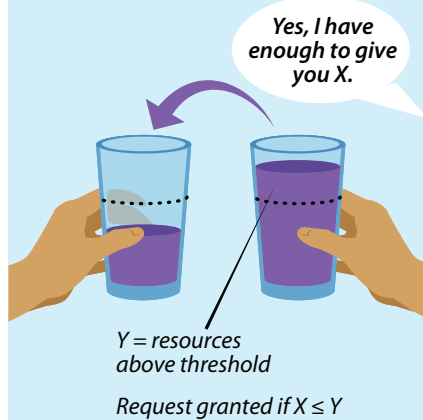
1 Request

Request to fill a need is made.



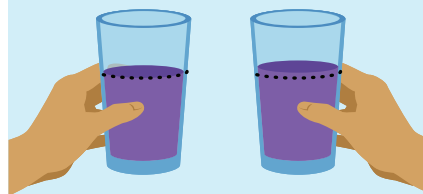
2 Response

Request is granted, as long as there are enough resources.

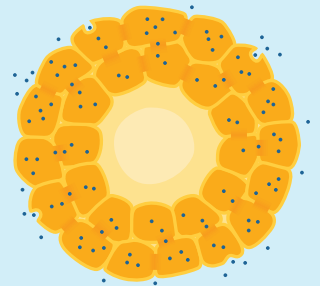


3 Outcome

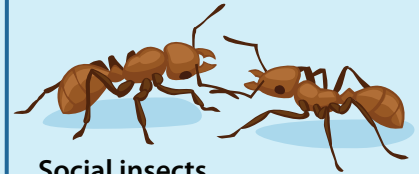
Limited risk pooling between partners, better survival



Examples



Cells
Nutrient transfer in multicellularity



Social insects
Trophallaxis - food transfer from full to hungry ants



Vampire bats
Blood shared most with hungry bats



Humans
Livestock and food sharing systems

Scaling Up Cooperation

